

## Part 1: Synchronizing Your Data Collector with Your PC

To synchronize a data collector to Windows XP, you must use Microsoft ActiveSync.

To find out which the version of Windows your computer is running click on the Start menu, right-click Computer, and select Properties. The version is listed after System Type.

1. If you do not already have ActiveSync installed on your computer, you can download it by clicking on the link below.

[Microsoft ActiveSync 4.5](#)

2. Open Microsoft ActiveSync by selecting the program under the Start menu, All Programs. Select File, then Connection Settings.



3. All options should be checked ON in this window. Then, Tap OK.



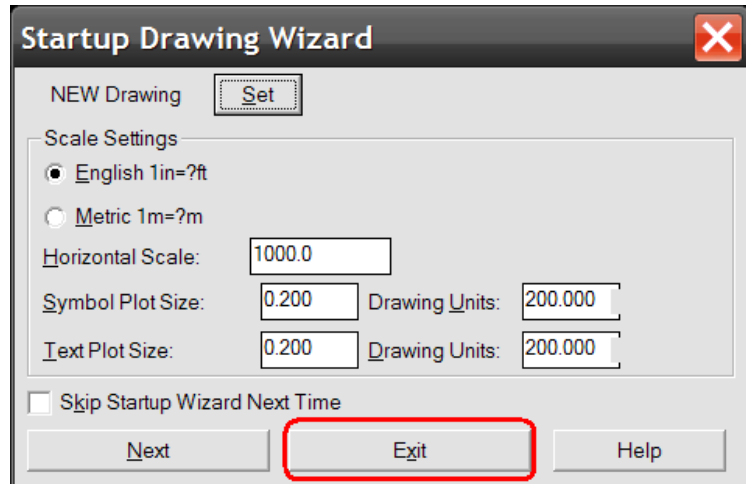
4. Connect the Data Collector to the PC with your USB cable, to allow ActiveSync to search for and connect with the device. Once your computer has acknowledged the data collector, Microsoft ActiveSync will ask if you would like to set up a partnership. Please select “No.” Then, click Next. This will set the connection as a “Guest”, and allow you to transfer data.



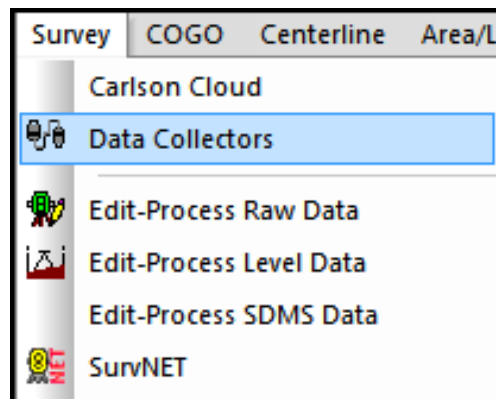
You should now have the data collector synchronized with the PC.

## Part 2: Downloading Your Data To Carlson Desktop Software

1. Open your Carlson desktop software program, and exit the Startup Drawing Wizard (if it launches).



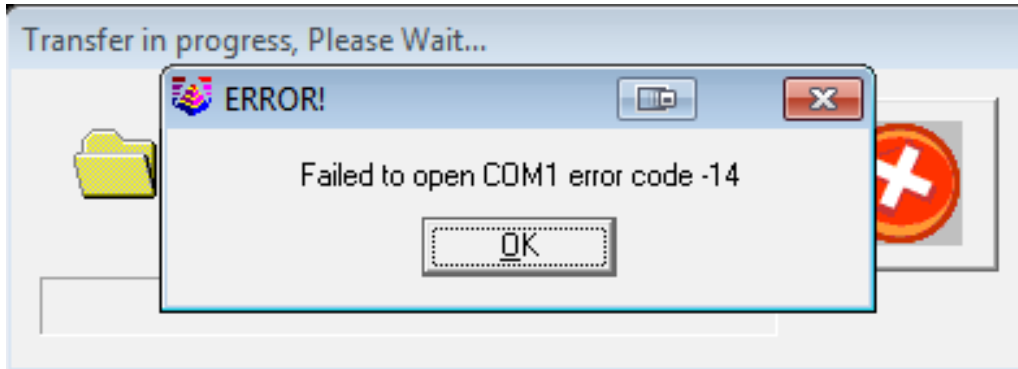
2. Click on the Survey drop-down and select Data Collectors.



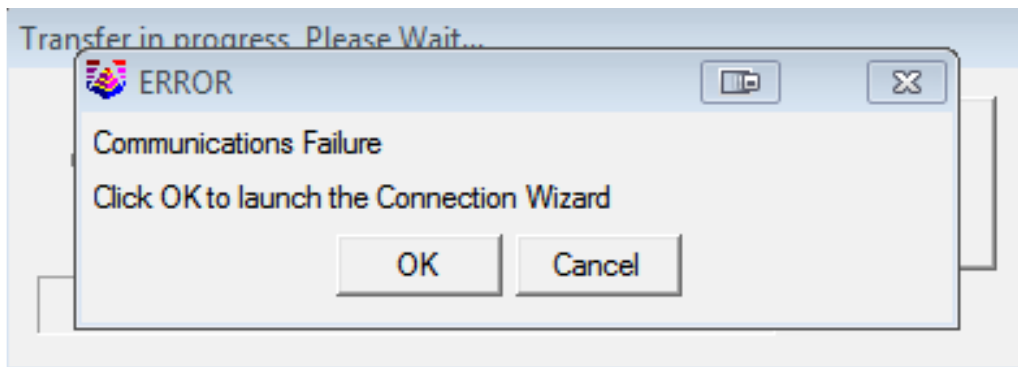
3. Select "Carlson SurvCE/CSI Mobile" as your data collector connection.



4. You may receive a communication failure message, initially. Click, OK to continue.



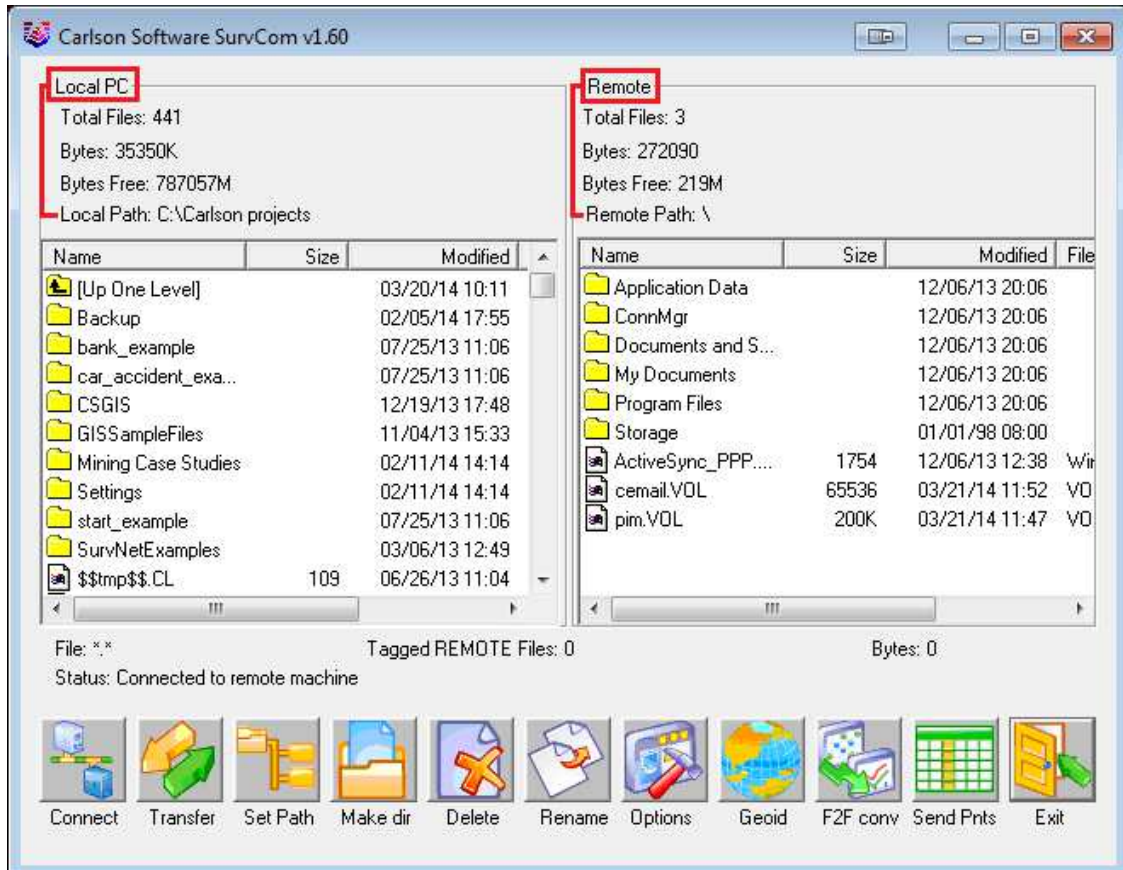
5. You will be prompted to "launch the Connection Wizard." Please, click OK.






6. Click on the USB icon to allow the Connection Wizard to connect to your device.

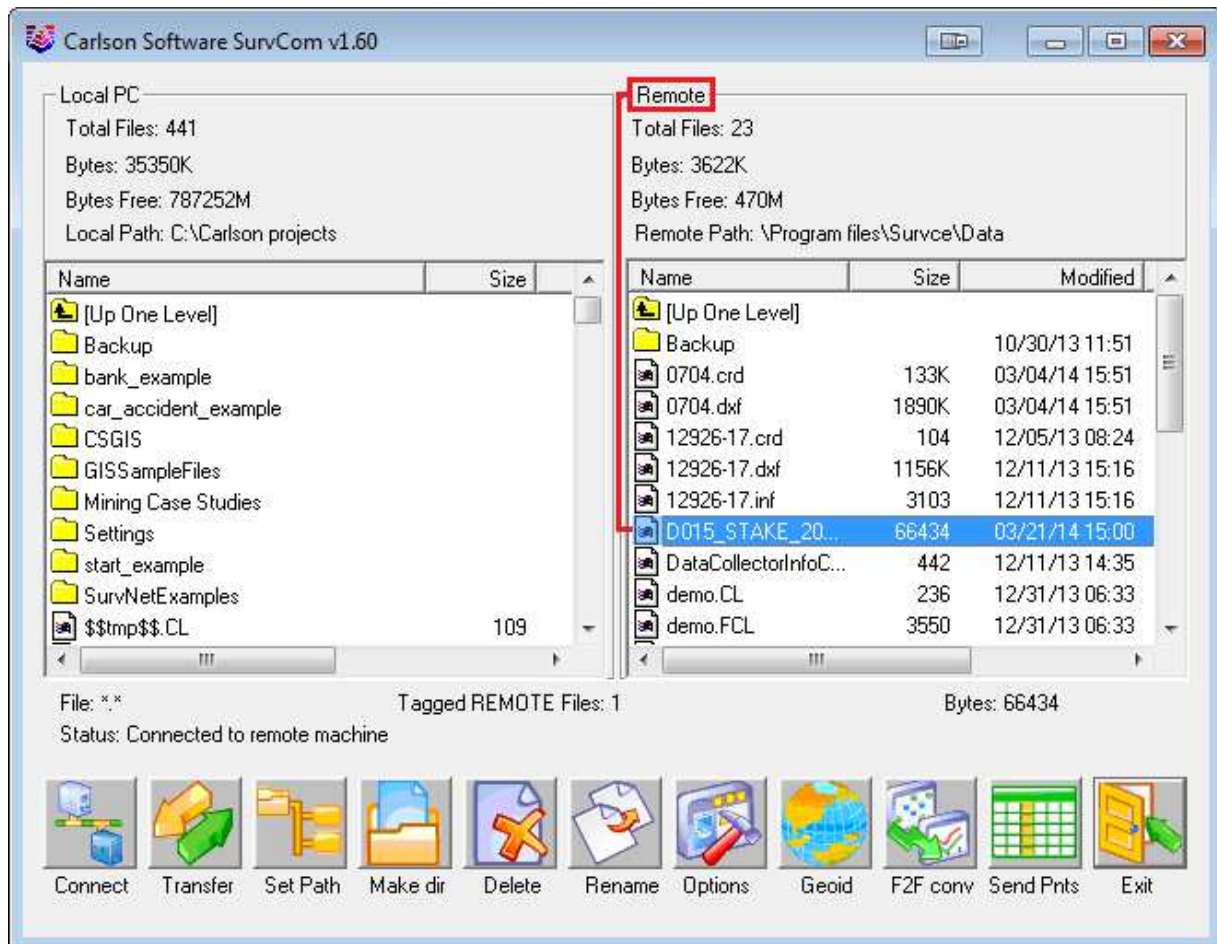


- The SurvCom window is divided into two panes. Each window pane shows where the program is currently looking at data. This is referred to as the Data Path. The Local Path displays the data on your PC on the left-hand side. The Remote Path displays data in your data collector on the right-hand side. The Remote path should always be set to the DATA folder, of your data collector.

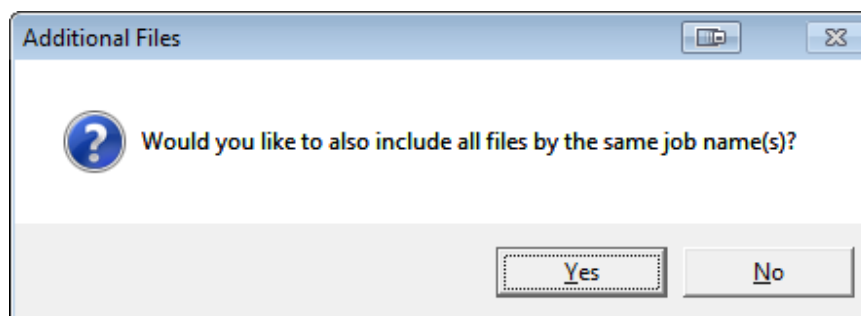


To set the path to the data folder: First, double-click on  Program Files  
Then, double-click on  SurvCE  
Then, double-click on  Data

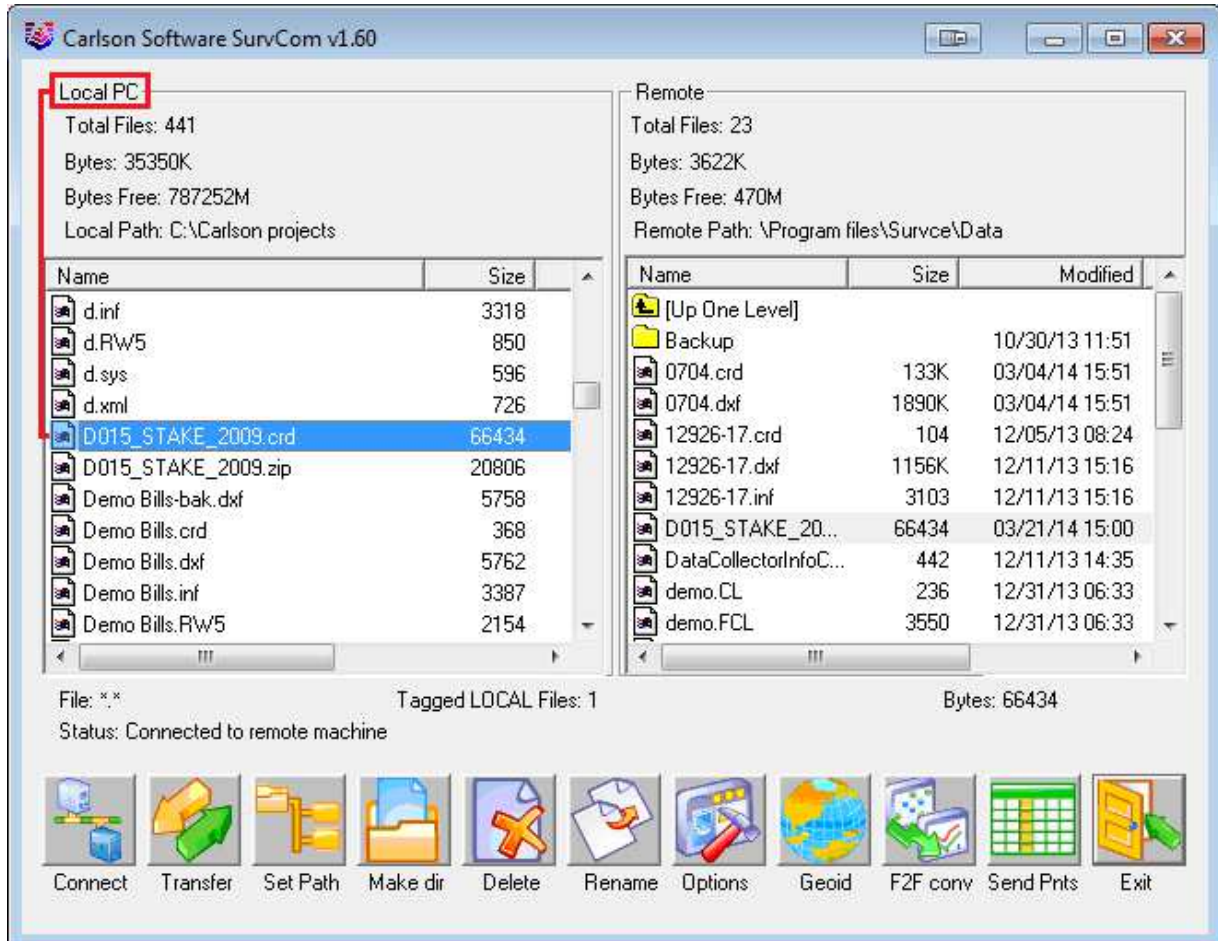
- Browse to the data file, that you wish to transfer. Then, double-click on the file name to transfer the file.



You will be asked if you would like to transfer all files by the same job name. This is advised; so as to keep a backup of your field data, on your PC.

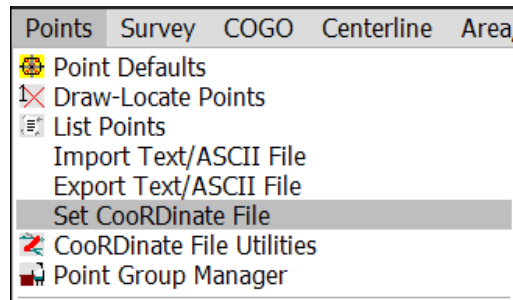


The file(S) will automatically transfer to the path (folder) specified under the heading of Local Path, on the left-hand side.

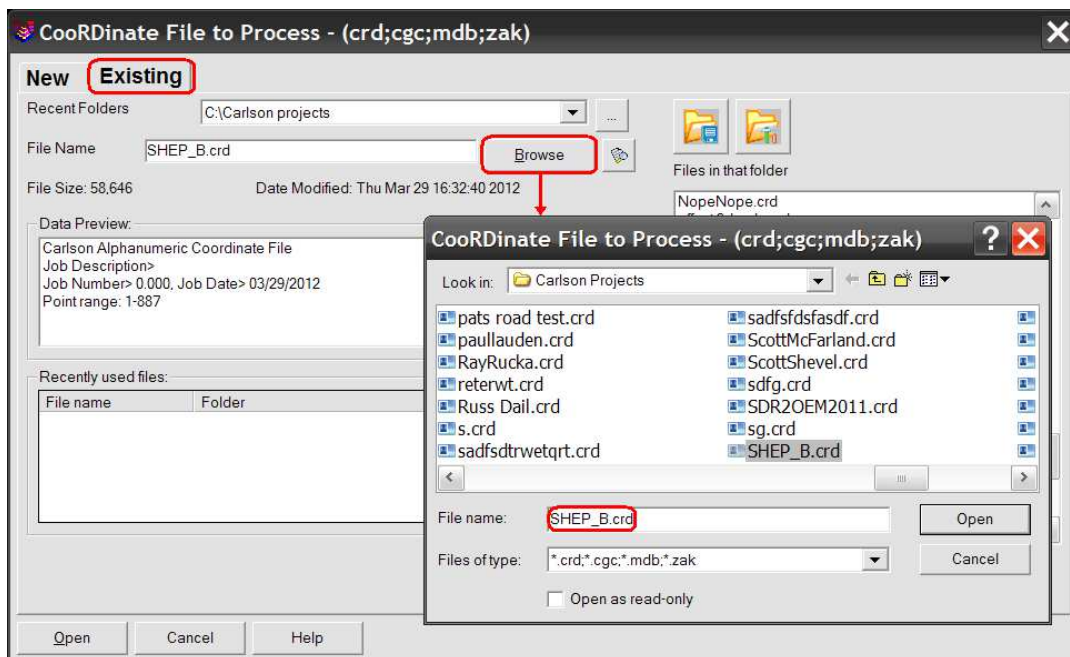


### Part 3: Drawing Your Collected Points

1. First, set your coordinate file as active, by clicking on the Points drop-down and selecting "Set Coordinate File".



2. Click on the EXISTING tab, browse to your the CRD , and then click Open.



3. To draw the points from coordinate file, click on the Points drop-down and select "Draw-Locate Points." Then, click on the "Draw All" button at the middle-bottom of the screen.

